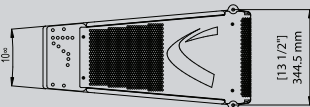
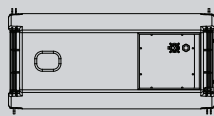
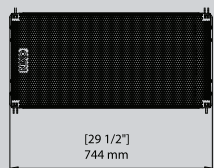
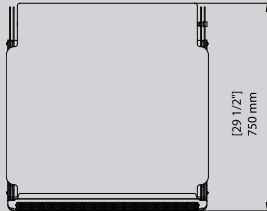


GEO D10

NEXO



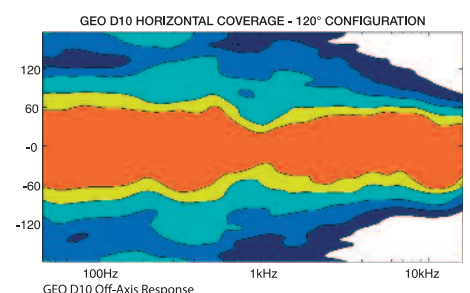
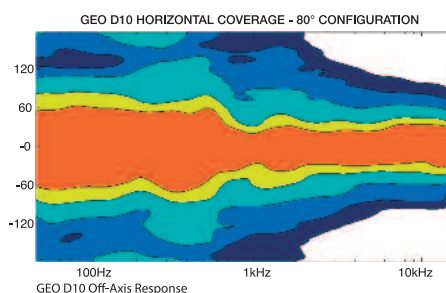
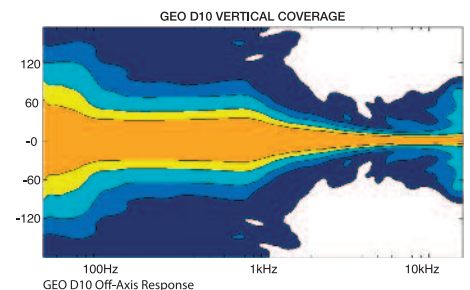
GEO D10 Advantages

- Coherent Wave Propagation from NEXO's Advanced GEO Hyperbolic Wavesource
- Advanced Constant Velocity Profile Output from 5° Wavefront GEO Waveguide
- Compression Mode Rigging System with Logarithmic Angles from 0.2° to 10°
- GeoSoft2 Configurable, EtherSound™ (Network) Controllable and GeoSite (Laser) Aimable System Deployment
- Legendary NEXO Sonic Innovation in an
- Bottom-Line Engineering for Theatre to Arena-Sized Fixed & Mobile Applications

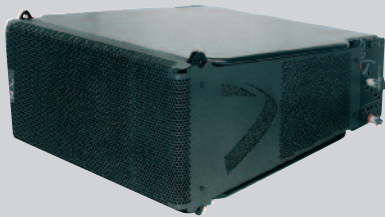
NEXO's 3-way GEO D10 vertical array module achieves exceptional MF-LF output (105dB SPL nominal sensitivity-1W @1m) from a single 12" loudspeaker coupled to a proprietary Directivity Phase Device (DPD).

GEO D10 vertical MF/HF pattern control is array dependent, horizontal MF/HF coverage is configurable at 80° or 120°. NEXO's digital, EtherSound-enabled NX242 TDcontroller maximizes MF/HF coherency while twin 8" side-firing transducers create exceptional cardioid LF coverage.

An integral flying system optimizes venuespecific array design from precise, logarithmic inter-cabinet angle adjustments as configured by GEOSoft2 array software. The Over/Under GEODBUMPER maximizes rigging utility, allowing up to 24x GEO Ds to fly together, or stagestacking of GEO D10 with GEO SUB and CD18.



NEXO
www.nexo.fr



NEXO is one of the world's leading sound reinforcement loudspeaker manufacturers. Founded in 1979, the company is dedicated to crafting practical solutions with solid engineering. Each new design begins with a proprietary sophisticated computer simulation process that allows every parameter to be extensively modeled and simulated, leading to breakthrough cost and performance gains. NEXO's comprehensive product line includes loudspeakers, analogue and digital control electronics and amplification; all designed to deliver consistent sound quality and long term reliability for a broad range of applications.

NEXO S.A.
 Parc d'Activité
 du Pré de la Dame Jeanne
 B.P. 5
 60128 PLAAILLY
 Tel: +33 (0) 3 44 99 00 70
 Fax: +33 (0) 3 44 99 00 30
 e-mail: info@nexo.fr

NEXO LatAM
 Tel: +1 305 677 9322
 Fax: +1 360 234 7870
 e-mail: info@nexo.fr

NEXO Asia
 GPO Box 806
 Hong Kong
 SAR China
 Tel: +852 9096 3472
 Fax: +852 2104 3214
 e-mail: info@nexo.fr

GEO D10 PRODUCT FEATURES

Components	HF: 1x 3" voice coil, 1.4" throat 16Ω driver on a 5° hyperboloid reflective wavesource. MF/LF (front-firing): 1x 12" (30cm) high excursion neodymium 16Ω driver. LF (side-firing): 2x 8" (20cm) neodymium 8Ω drivers in series.
Height x Width x Depth	380 x 744 x 750mm (15" x 29 1/3" x 29.5") including array assembly system Rigging access to axis height 344mm(13.5")
Shape	10° Trapezoid.
Weight: net	57kg (125.7lbs) including array assembly system.
Connectors	1x AMPHENOL EP6 6-pole socket In; 1x AMPHENOL AP6 6-pole connector Through.
Construction	Baltic Birch ply with structured black coating.
Front finish	Molded Dark Grey Metal Grill.
Flying points	Integral flying system. Intercabinet angle adjustments = 0.2°, 0.315°, 0.5°, 0.8°, 1.25°, 2.0°, 3.15°, 5°, 6.3°, 8.0°, 10.0° (logarithmic steps)

SYSTEM SPECIFICATIONS GEO D10 WITH NX242 TDCONTROLLER

Frequency response [a]	60Hz – 19kHz ±3dB
Usable range @-6dB [a]	55Hz –20kHz ±6dB
Sensitivity 1W @ 1m [b]	105dB SPL nominal (103dB SPL wideband)
Peak SPL @ 1m [b]	Configuration dependent [d]
Dispersion [c]	Vertical plane: Configuration dependent [d]. Horizontal plane: Configurable 80°/120° Low Frequency: Cardioid
Crossover frequency	LF-MF: 300Hz Active MF- HF: 1.1kHz Passive or Active (internally configurable).
Nominal impedance	HF: 16Ω; LF/MF front:16Ω LF rear: 16Ω.
Recommended amplifiers	HF: 875 to 1550Watts into 4Ω MF/LF front: 1750 to 3100Watts into 4Ω
3x GEO D10 in Parallel	LF rear section: 1750 to 3100Watts into 4Ω
4x GEO D10 in parallel	HF: 1000 to 1800Watts into 4Ω MF/LF front: 2000 to 3600Watts into 4Ω LF rear section: 2000 to 3600Watts into 4Ω
6x GEO D10 in parallel	HF: 1650 to 3000Watts into 2Ω MF/LF front: 3300 to 6000Watts into 2Ω LF rear section: 3300 to 6000Watts into 2Ω

SYSTEM OPERATION

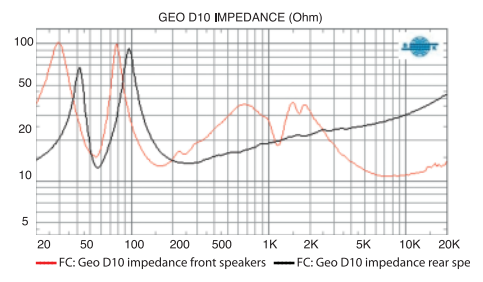
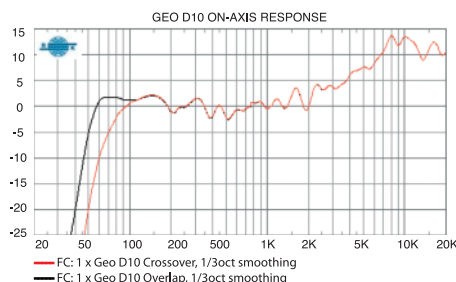
Electronic Controller	The NX242 Digital TDcontroller (with NXtension Card) presets are precisely matched to the GEO D Series cabinets and include sophisticated protection systems as well as advanced cardioid directivity DSP algorithms. Using GEO D Series cabinets without a properly connected NX242 & NXtension Card will result in poor sound quality and can damage components.
Array Design	Arrays of less than 3x GEO D10 will provide poor dispersion control and are neither recommended nor supported.
SubBass	GEO SUB directional sub extends system low frequency response down to 35Hz
Speaker Cables	Active: 5(-) / 6(+): HF: 3(-) / 4(+):LF/MF Front: 1(-) / 2(+): LF Rear. Passive: 5(-) / 6(+): Not Connected: 3(-) / 4(+):LF/MF/HF Front: 1(-) / 2(+): LF Rear.
Rigging System	Please refer to the GEO D User Manual before any operation.

SHIPPING & ORDERING

Packaging	GEO D are packaged individually or in groups of 3x in NEXO GEO D dollies. Order as GEO D10.
-----------	---------------------------------------------------------------------------------------------

As part of a policy of continual improvement, NEXO reserves the right to change specifications without notice.

[a] Response curves and data: anechoic far field above 200Hz, half-space below 200Hz. [b] Sensitivity & peak SPL: will depend on spectral distribution. Measured with band limited pink noise. Refers to the specified ±3dB range. Data are for speaker + processor + recommended amplifier Combinations [c] Directivity curves and data: 1/3rd octave smoothed frequency response, normalized to on-axis response. Data obtained by computer processing of off-axis response curves. [d] Please refer to the GEO D User Manual. Usable range data: Frequency response capability with TD crossover slopes removed.



LIMITED WARRANTY

NEXO loudspeakers and electronics are covered against defects in workmanship or materials for a period of two (2) years from the original date of purchase. At the option of NEXO the defective item will be repaired/replaced with no charge for materials/labour. The item is to be adequately packaged and dispatched, pre-paid, to a NEXO authorised distributor/service centre. Unauthorised repair shall void the warranty. The NEXO warranty does not cover cosmetics or finish and does not apply to any items which in NEXO's opinion have failed due to used abuse, accidents, modifications or any type of misuse. All images and text herein are the property of NEXO SA, and deemed accurate, although specifications are subject to change without notice.